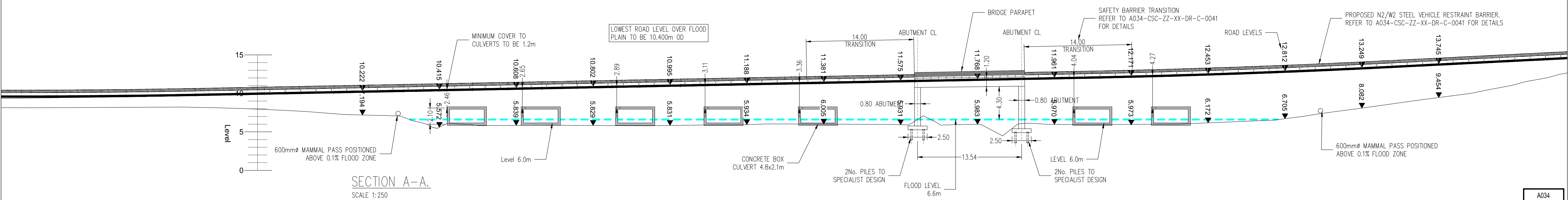
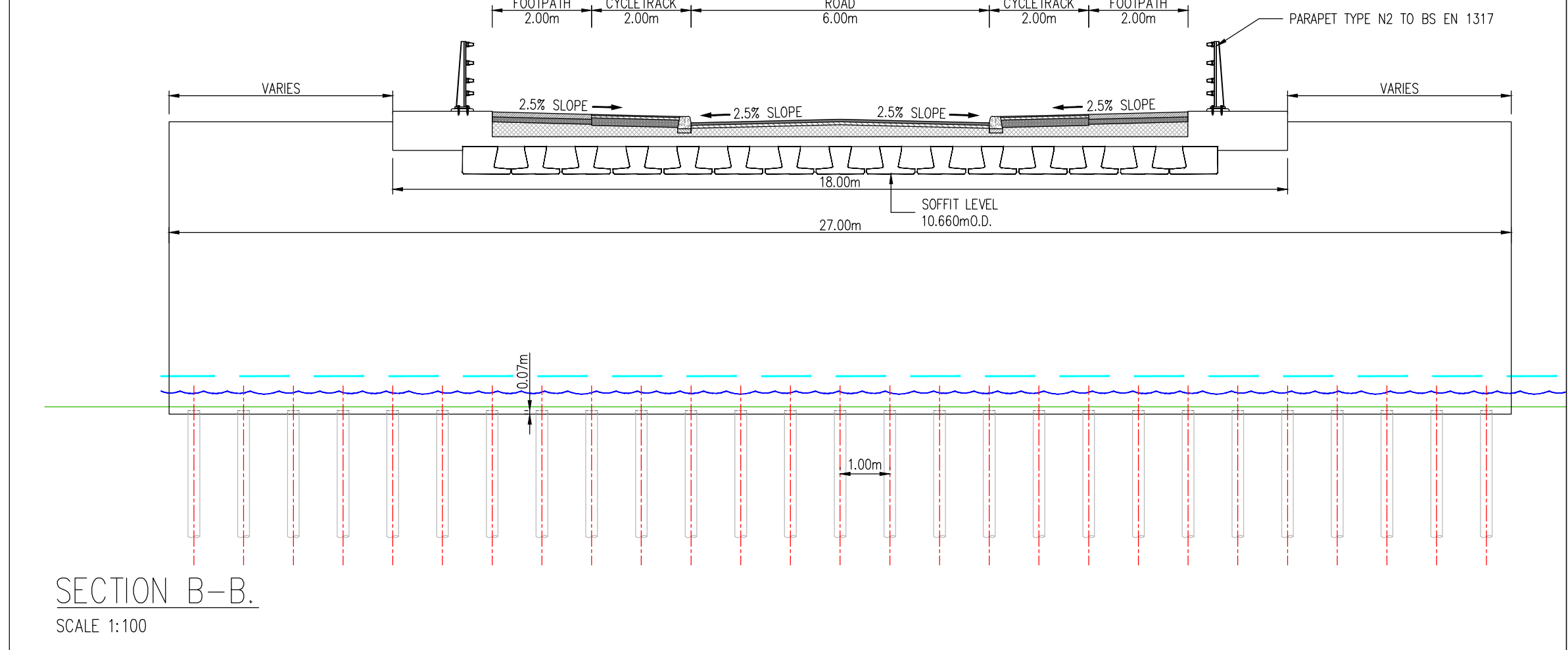
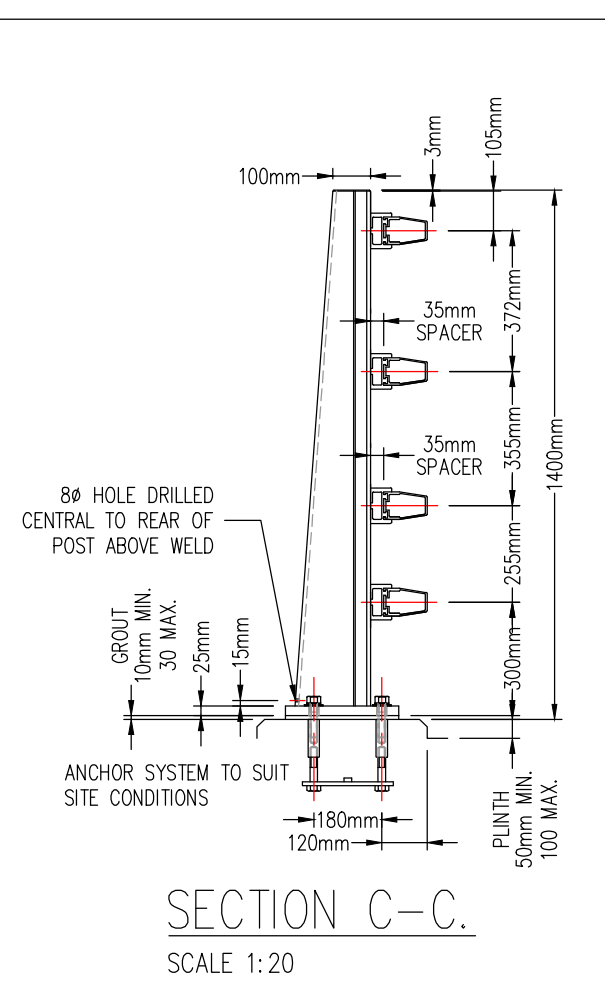
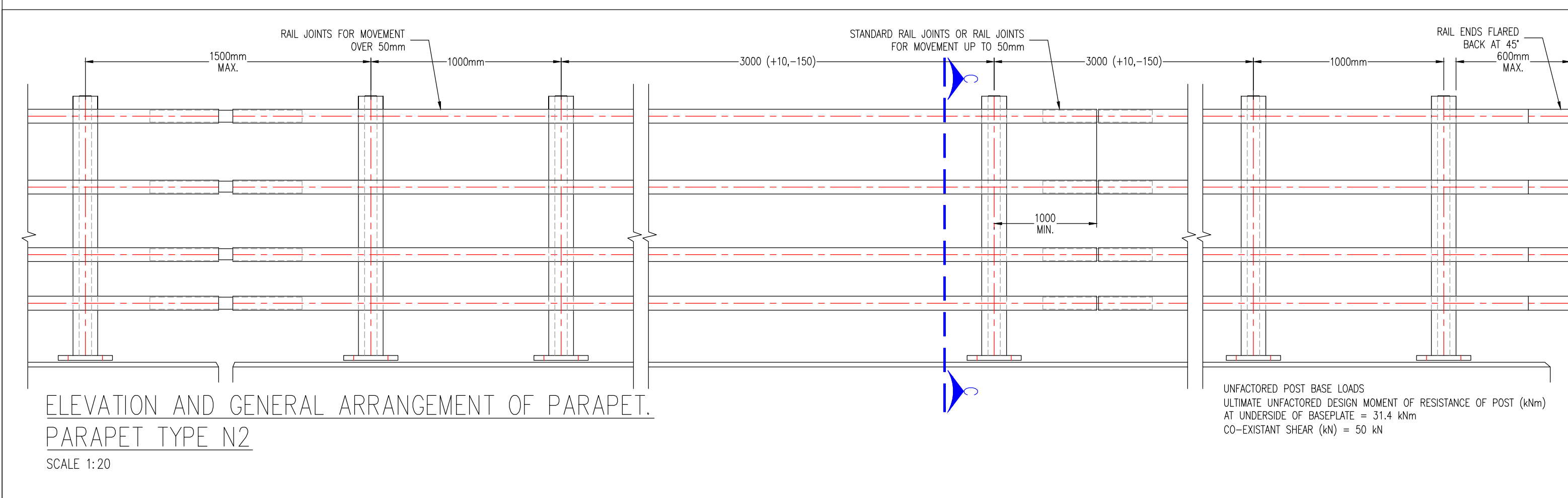


RECEIVED: 14/08/2023



PLANNING DRAWING.
 NOT FOR CONSTRUCTION.
 ALL LEVELS GIVEN ARE
 RELATIVE TO ORDNANCE DATUM.
 THIS DRAWING HAS BEEN ISSUED FOR INFORMATION
 PURPOSES ONLY AND MUST NOT BE USED
 FOR CONSTRUCTION UNDER ANY CIRCUMSTANCES

NOTES

- For setting out refer to Architect's drawings.
- This drawing to be read in conjunction with all other Architectural and Engineering drawings and all other relevant drawings and Specifications.
- DO NOT SCALE THIS DRAWING. Use figured dimensions only.
- No part of this document may be reproduced or transmitted in any form or stored in any retrieval system of any nature without the written permission as copyright holder except as agreed for use on the project for which the document was originally issued.
- Ordnance Survey Ireland Licence Number EN 0074023

Rev. No.	Date	REVISION NOTE	Drn. By	Chkd. By
P1	12.12.2022	ISSUED FOR PLANNING	SC	NB
P2	13.07.2023	ISSUED FOR PLANNING	SC	NB
P3	09.08.2023	ISSUED FOR PLANNING	SC	NB

Client	Keldrum Limited			
Project	Large-scale Residential Development at Tinikilly, Wicklow			
Title	Proposed Bridge and Culvert Arrangement			
Dwg. No.	A034-CSC-ZZ-XX-DR-C-0025			
Date	Drn. by	Chkd. by	Aprvd. by	Scale
Oct 2022	SC	NB	OS	AS SHOWN @ A1
				Revision
				P3

CS Consulting Group
 DUBLIN | LONDON | LIMERICK

Head Office
 19-22 Dame Street, Dublin 2.
 T: +353 (0)1 5480863
 e: info@csconsulting.ie
 w: www.csconsulting.ie

Quality Environment I.S. EN ISO 9001:2008
 Health & Safety I.S. EN ISO 14001:2004
 I.S. EN ISO 50001:2011
 OHSAS 18001:2007

A034